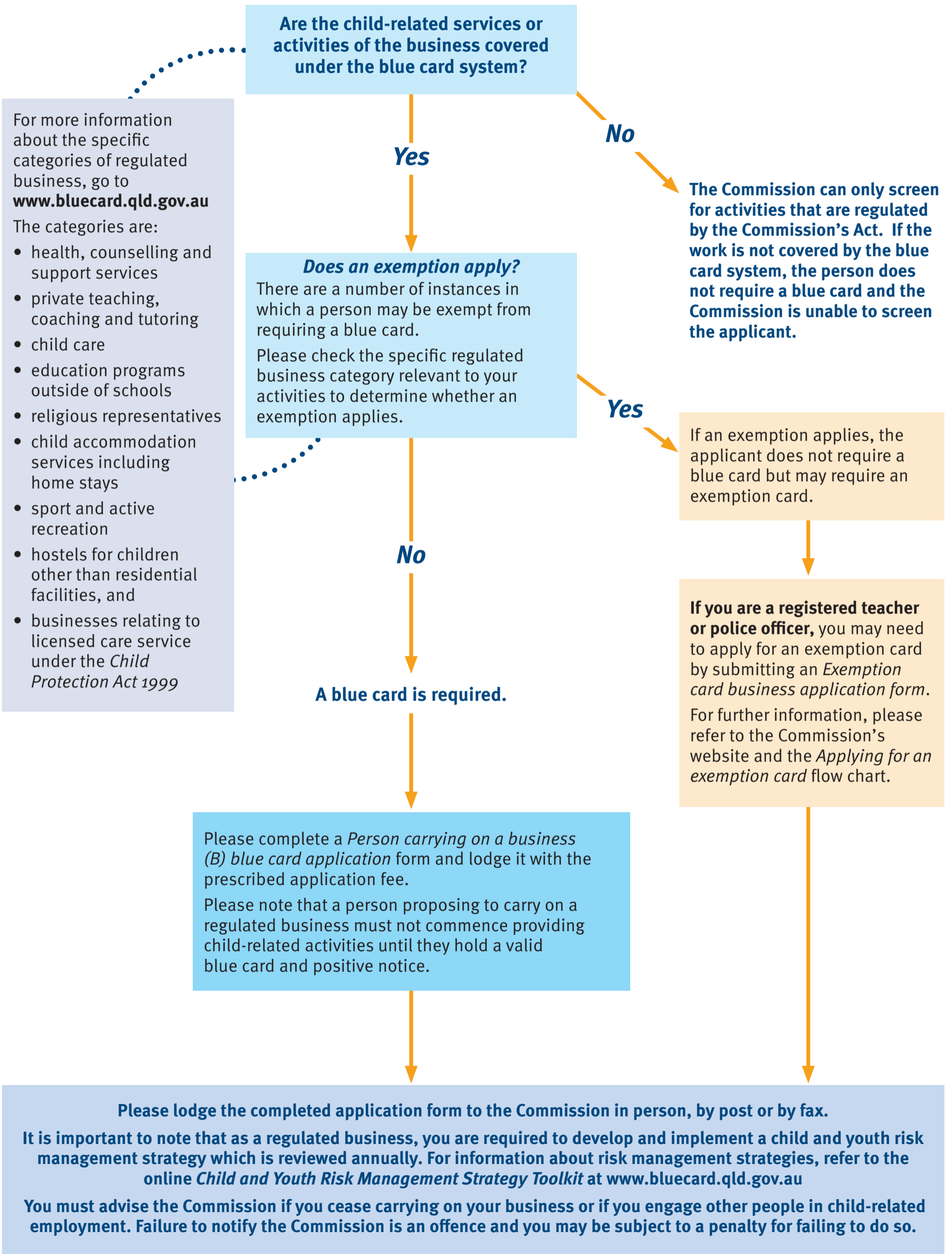


Blue card application process for persons carrying on a regulated business



For more information about the specific categories of regulated business, go to www.bluecard.qld.gov.au

The categories are:

- health, counselling and support services
- private teaching, coaching and tutoring
- child care
- education programs outside of schools
- religious representatives
- child accommodation services including home stays
- sport and active recreation
- hostels for children other than residential facilities, and
- businesses relating to licensed care service under the *Child Protection Act 1999*