

# OTHER *activities*

## COLLABORATIVE PROJECTS

*Children's Activities, People's Festival, CHOGM*

From 2–8 October 2001, the Commission for Children and Young People coordinated children's activities for the Commonwealth People's Festival in conjunction with 23 government and non-government stakeholders.

In addition to the electronic and face-to-face workshops co-ordinated by the Commission, the Festival featured a range of other exhibits and activities including:

- a rainforest boardwalk featuring Queensland's endangered species and shows by celebrity rangers (Environmental Protection Agency)
- a mobile activity centre (Department of Sport and Recreation)
- a secure play and activity area for younger children (Department of Families)
- interactive educational displays (Education Queensland)
- "hands on" science displays and daily science shows (the Sciencentre)
- a youth stage (coordinated by Education Queensland and the Commission)
- an exhibit about the State Youth Advisory Council (Department of Employment and Training), and
- information and displays about children's services hosted by a range of non-government organisations.

The Commission's "Dare to Care" electronic workshop which provided children and young people with the opportunity to voice their ideas about what makes a community 'child and youth friendly' was extremely popular.

Children from throughout the Commonwealth were encouraged to submit their ideas by mail, electronically through the Queensland Government's CHOGM website or through a range of other media including artworks, poetry, photography animation and video.

The Commission engaged Brisbane high school students as "roving reporters" to interview children and young people and members of the public about their views.

These views were published in a *Blueprint for a Child and Youth Friendly Commonwealth*, which features comments on the arts, culture, education, employment and training, entertainment and recreation, environment, family, health, police and the law, safety, town planning and transport. Thousands of copies of the Blueprint have been distributed throughout Queensland.

### *Satellite Broadcast – young people's consent to medical treatment*

In November 2001, Queensland Health hosted a statewide satellite broadcast, chaired by the Commission's Principal Policy Advisor, in which an expert panel of lawyers, academics and youth advocates discussed young people's consent to medical treatment.

# OTHER *activities*

## *Focus on Fathering Project*

The Commission's Focus on Fathering Project included collaboration with the Aboriginal and Torres Strait Islander Advisory Board to explore the impact on Aboriginal and Torres Strait Islander children when their fathers are incarcerated.

As part of the project, the Focus on Fathering Forum was jointly organised with the School of Applied Psychology, Griffith University Gold Coast. Held in February 2002, it brought together 170 researchers, policy-makers, practitioners and fathers interested in issues relating to children and young people.

## *Seminars, conferences and forums*

- Professor Clyde Hertzman videoconference and seminar - in November 2001 co-sponsored by the Commission and QUT's School of Public Health
- Mary Gordon forum – on Tuesday 24 July 2001 Mary Gordon presented her “Roots of Empathy” program at the Royal Children's Hospital. The event was sponsored by the Commission and hosted by the Royal Children's Hospital.

## *Let's Get Loud Project*

In conjunction with Peakcare and the Queensland Youth Housing Coalition, the Research Unit began work in 2002 on a project to examine how young people feel about the accommodation and placement options available to them.

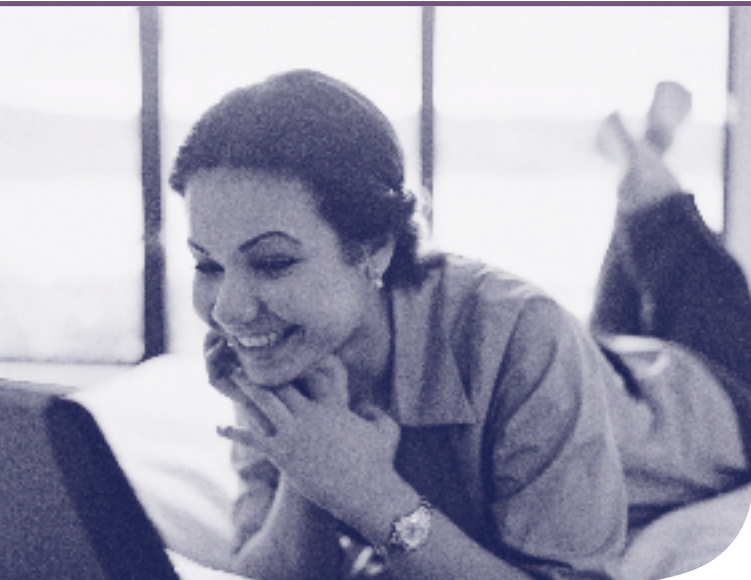
## **COMMISSION REPRESENTATION**

Commission staff represented the organisation on a wide range of committees, working groups and other forums in the 2002–2003 financial year. The following list is in alphabetical order.

- Abused Child Trust Research Committee
- Adoption of Children Act Reference Group
- Alternative Care Research Reference Group
- Alternative Education Working Party
- Australasian Evaluation Society, Queensland Committee
- Child Care Forum
- Children's Issues Committee – Queensland Law Society
- Child Protection Council 2002
- Child Protection Strategic Framework, Policy Action Team
- Child Protection Partners Forum
- Child Protection Week Committee 2002
- Children's Week Committee
- CHOGM Coordination Committee Qld – Entertainment sub-committee, Organising Committee – Children's Program
- Coalition for Australia's Children
- Commonwealth People's Festival – Working Committee on Education
- Community Capacity Building Cluster Group

- Community Renewal Palm Island Steering Committee
- Community Services Coordinating Group
- Creche and Kindergarten Association, Board of Management
- Crime and Misconduct Commission Reference Group
- Crime Statistics Network
- Detention of Children in Watchhouses Liaison Committee
- Education Queensland Child Protection Policy Working Party
- Evaluation Reference Committee for the Juvenile Justice Act
- Forde Implementation Monitoring Committee – Second Report Action Committee
- Human Rights and Equal Opportunity Inquiry into Refugee Children in Refugee Detention
- ISPCAN Congress 2004 Organising Committee – Co-Chair and Co-Chair, Participation Sub-committee
- Key Centre for Ethics, Law, Justice and Governance - Advisory Board
- Ministerial Subcommittee on Young People's Transitions – Department of Employment and Training
- Multicultural Affairs Interdepartmental Working Party
- NIFTeY Board of Directors
- Police and Young People Support Network Steering Committee
- Putting Families First – Policy Action Team
- Pregnant and Parenting Young Women's Working Group
- Project Advisory Team for the Department of Families Evaluation of Advocacy Agencies in Queensland
- Project Axis Interdepartmental Working Party
- Queensland Arts Accreditation Council
- QUT Access Research Project Reference Committee
- QUT Faculty of Education Academic Board
- QUT Planned Giving Committee
- Reference committee for Gambling and Young People - Baseline Data study
- Reference committee for the Youth Advocacy Centre's Video Project 'What's the Story?'
- SCAN Evaluation Reference Group
- School Based Youth Health Nurse Program
- Senior policy officers group contributing to the Human Services CEO Project - Enhanced Collaboration in the Management of Client Information.
- State Youth Advisory Council
- Taskforce on Crime Prevention - Senior Officers Group
- The Lighthouse Project Steering Committee
- UNICEF National Taskforce on Child Rights
- Working Group on Treatment, Monitoring and Supervision of Child Sex Offenders

# OTHER *activities*



- Forum on matters affecting refugee children
- Workshops for Indigenous children and young people on Palm Island
- Consultation with children and young people on Cape York to inform the Commission's submission to the *Cape York Justice Study* conducted by Justice Tony Fitzgerald.

- Youth Alcohol and Drug Sub-Committee of Queensland Drug Coordinating Committee.

## COMMUNITY ENGAGEMENT

In 2001-2002, the Commission engaged in a range of projects, both in Brisbane and in regional or remote areas, which involved community engagement. The Commission's community engagement work resulted in valuable input for a range of projects and reports, including:

- the Indigenous Fathering Project
- Consultation for report – *Volatile Substance Misuse in Queensland*
- Consultation for report – *Children and Young People in Queensland: a Snapshot*
- CHOGM People's Festival – Children's Activities engaged children and young people on their views for a child-friendly Commonwealth